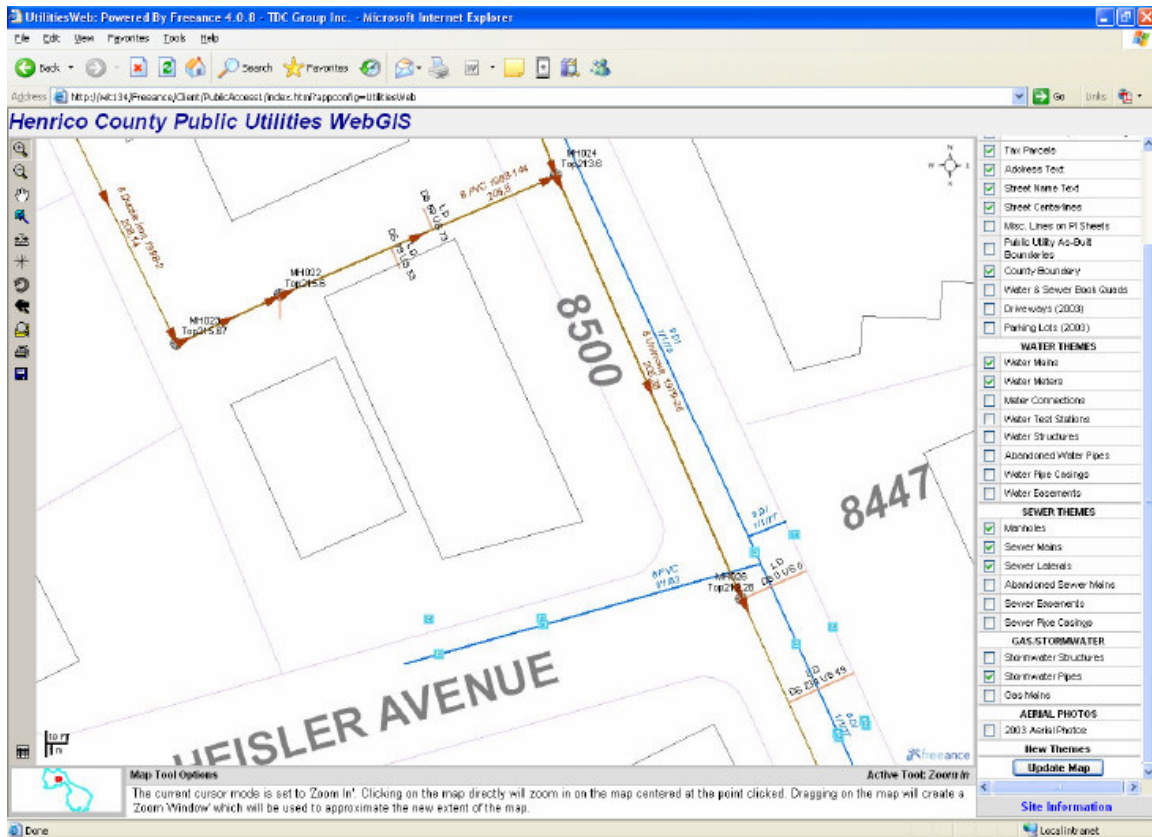




Henrico County Public Utilities Web GIS (Intranet)



The purpose of this web site is to provide a replacement for the (out-of date) Water and Sewer Map Books that sit on the front counter of the Public Utilities reception area. Customers often request photocopies of portions of the 22" x 34" map sheets. The front counter staff (3 administrative assistants) had to carry the bound map books to the photocopier and place the desired portion of the sheet on the glass to copy.

This application features water and sewer mains, laterals, meters, manholes, and other utility structures. One unique aspect is that use of multiple labels for several of the features. For example, the manholes have both the MH number and Top Elevation labeled. The Sewer Mains are labeled using four fields; Diameter, Pipe Material, As-Built Plan #, and Invert Elevation.

When serving a customer, the administrative assistant uses the search tools to locate an area by parcel ID, address, or street name. The "map book" features are already "checked on". The specific area is zoomed to and a map can be printed for the customer – all in a matter of seconds. If the customer requests additional themes, such as Aerial Photography, those themes can be turned on and printed.